



# CENTER FOR CREATIVE LAND RECYCLING

RECLAIM. CONNECT. TRANSFORM.

## EPA Brownfields & Land Revitalization Technical Assistance Partners Webinar

July 31<sup>st</sup>, 2019

Claire Weston, Program Associate, Center for Creative Land Recycling  
Jean Hamerman, Deputy Director, Center for Creative Land Recycling



# The Center for Creative Land Recycling (CCLR or “See Clear”)



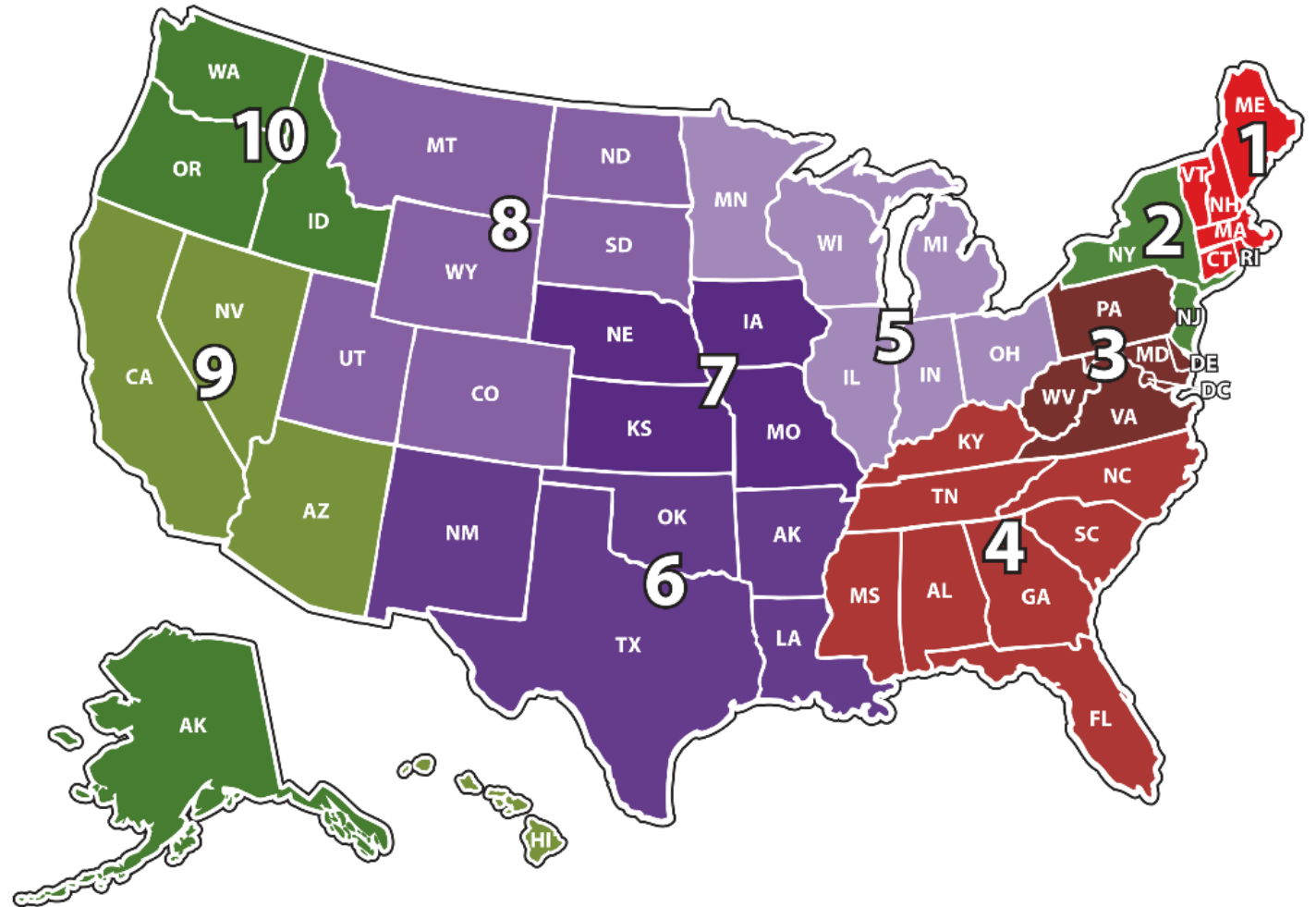
- **Oldest, national non-profit championing land recycling**
- **U.S. EPA Technical Assistance to Brownfield Communities (TAB) provider in Regions 2, 9 and 10 through 2021 (10 states + territories)**



# The Center for Creative Land Recycling (CCLR or “See Clear”)



- **U.S. EPA Technical Assistance to Brownfield Communities (TAB) provider in Regions 2, 9 and 10 through 2021 (10 states + territories)**



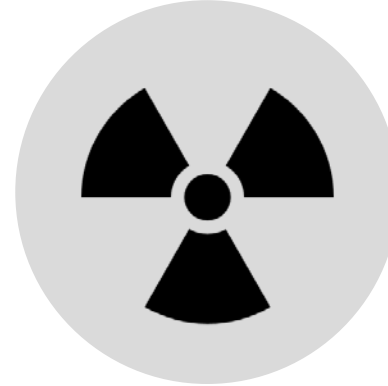
# CCLR's Mission and Vision



Mitigate climate change by conserving open space and reusing existing infrastructure



Provide housing, public parks and space for people



Clean up contamination that could impact our health



Create hundreds of thousands of jobs and billions in tax revenues

**Over the next 20 years, thousands of underutilized properties across America will be re-purposed in an intentional manner to increase environmental, physical, and economic well-being and reduce inequities.**

# How CCLR Serves You



- Technical Assistance/Connect to Resources
- EPA Grant Review
- Workshops and Webinars
- Newsletters/Social Media



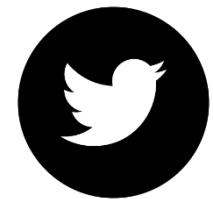
[www.cclr.org](http://www.cclr.org)



[www.facebook.com/landrecycling](http://www.facebook.com/landrecycling)



[www.linkedin.com/company/center-for-creative-land-recycling/](http://www.linkedin.com/company/center-for-creative-land-recycling/)



[www.twitter.com/landrecycling](http://www.twitter.com/landrecycling)

# Technical Assistance/Connect to Resources



*We meet you where you're at in the redevelopment process and can help you every step of the way.*

*One-on-one or office hour opportunities*

Brownfield  
Identification  
and  
Prioritization

Grants and  
Tax Credits

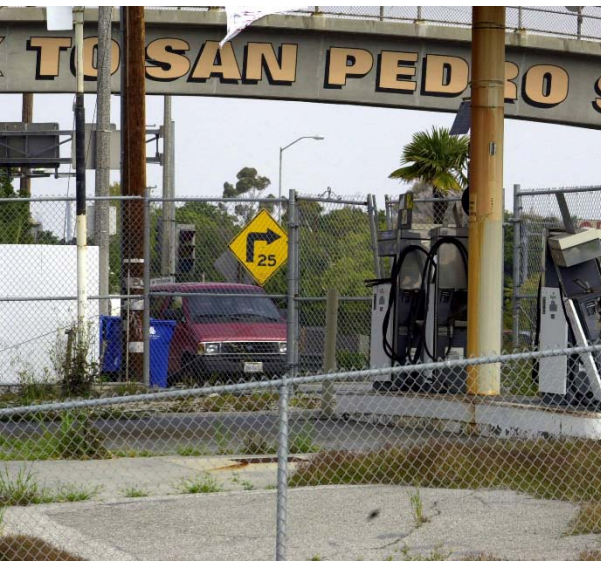
Sample  
documents  
including RFPs,  
Marketing  
Sheets, and  
other Grants

Contacts with  
Federal, State  
and Local  
Content  
Experts

# Case Study – San Pedro Welcome Park, Los Angeles, CA



- Former use: Gas station
- CCLR Assistance: assisted in community outreach initiative and conceptual design for the park.
- End use: Neighborhood park and restored natural canyon.





## MAC Grants

### Assessment Grant Program

- Assess the damage
- Prepare for your redevelopment project

### Cleanup Grant Program

- Clean up existing contamination following phase I and II env. assessments

### Multipurpose Grant Program

- assessment and cleanup activities at one or more brownfield sites in a target area



# Increase Your Chances with CCLR Grant Review



- This year we helped secure \$6.59 million in EPA grants nationwide and were advisors to several grantees who received an additional \$3.8 million
- What we do for you: review grant in full, score each section based on a detailed rubric, revise and provide comments, develop budget, answer questions
- Not just MAC grants, TBAs too! Targeted Brownfield Assessment grants are conducted by an EPA contractor on behalf of an eligible entity. Public entities and non-profits partnering with public entities may apply

*We improve your odds of winning in a very competitive grant cycle*

**FREE**

# Workshops and Webinars



**Brightfields 2019 – California Solar Summit** | Monday, August 5, 2019 | Sacramento, CA

**Solar Summit: Implementing Solar in National Grid Territories** | Thursday, October 3, 2019 | Syracuse, NY

**Urban Redevelopment: Building Stronger Communities** | Thursday, November 7, 2019 | Brooklyn, NY

**National Brownfields Conference 2019** | Wednesday, December 11, 2019 | Los Angeles, CA

**National Brownfields Leadership Summit Planning Meeting** | Tuesday, September 17, 2019 | Washington DC

CONN: CONNECTICUT  
MASS: MASSACHUSETTS  
NH: NEW HAMPSHIRE  
RI: RHODE ISLAND  
VT: VERMONT

Watch for webinars in the Climate Change Series, Developer Series, and Environmental Justice Series

keep up to date on our upcoming webinars and workshops!  
<https://www.clr.org/workshops>

# Workshops and Webinars



## CCLR's Redevelopment Rodeo at the 2019 EPA National Brownfields Conference



I want you to join the Redevelopment Rodeo



# Social Media and Online Resources



## Online resources

- Blogs
- Publications
- Archived webinars
- Social media

## Newsletters

- Grants and funding opportunities
- Workshops/webinar announcements
- Land recycling news



[/LandRecycling](#)



[/company/center-for-creative-land-recycling](#)



[@LandRecycling](#)

Subscribe to our newsletter at  
[www.cclr.org](http://www.cclr.org)!

# Case Study – Onondaga County, Roth Steel Site



Onondaga participates in Redevelopment Rodeo at CCLR's Annual Redevelopment Summit in Albany, NY



Armed with new experience, connections, and expert insights, Onondaga applies for, and is awarded, a \$200,000 EPA cleanup grant



Roth Steel site cleanup continues. 8 buildings demolished and agreement made with NYSDEC to divide site for cleanup



CCLR and Onondaga County partnered with the City of Syracuse to host the, *"Igniting Revitalization through Land Reuse"* workshop in October, 2018.

# Case Study – Onondaga County, Roth Steel Site



Read about this rewarding partnership in the New York State Association of Counties (NYSAC) Spring/Summer Newsletter!

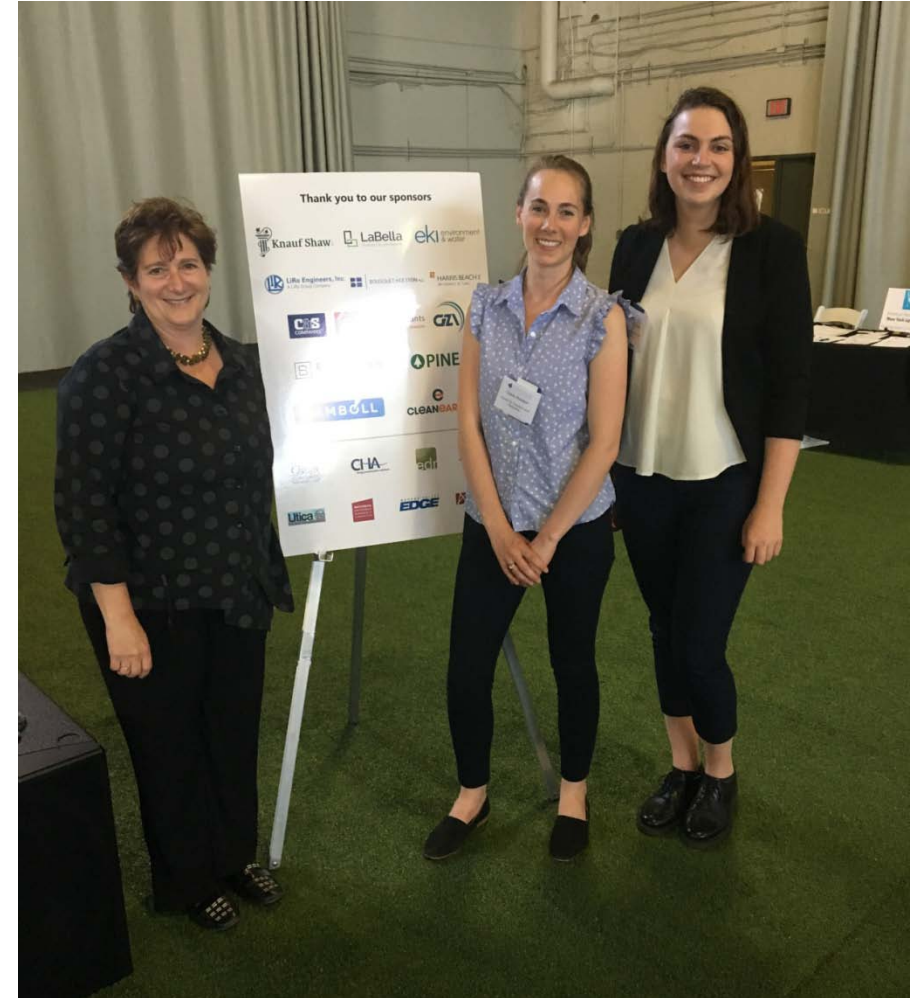
[https://issuu.com/nysac/docs/nysac\\_news\\_spring-summer\\_2019/42](https://issuu.com/nysac/docs/nysac_news_spring-summer_2019/42)

# How CCLR can help you:



1. Make us your first phone call.
2. CCLR is available to provide tailored assistance, and we encourage you to participate in our programmatic offerings.
3. Sign up to receive our newsletters and to stay on top of our programs.

*Brownfield redevelopment is a long-term process. We're here to help at each step of the way.*



# Questions?



**Executive Director  
Sarah Sieloff**

[sarah.sieloff@cclr.org](mailto:sarah.sieloff@cclr.org)

415-398-1080 x 110



**Deputy Director  
Jean Hamerman**

[jean.hamerman@cclr.org](mailto:jean.hamerman@cclr.org)

646-712-0535



**Director of Programs  
Ignacio Dayrit**

[ignacio.dayrit@cclr.org](mailto:ignacio.dayrit@cclr.org)

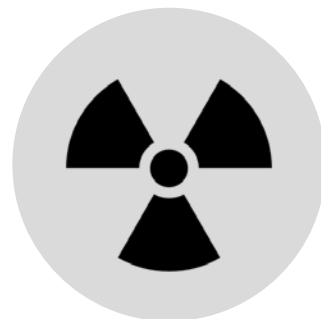
415-398-1080 x 107



**West Coast Program Associate  
Johanna Roth**

[johanna.roth@cclr.org](mailto:johanna.roth@cclr.org)

415-398-1080 x 102



**East Coast Program Associate  
Claire Weston**

[claire.weston@cclr.org](mailto:claire.weston@cclr.org)

802-488-4690